

2007 Toyota Hilux 3.0 Turbo Diesel Manual



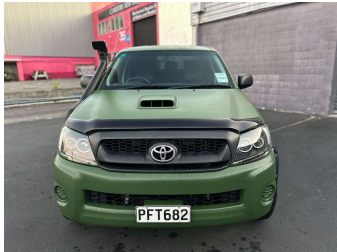
CARS CONNECT

AWOS UTES VAN CARS

Finance this car from

\$105.61*

per week

*Finance calculation based on a 60 month term, no deposit and with an example annual fixed interest rate of 9.95%. Actual interest rate may be higher or lower includes an establishment fee of \$495.00 and a monthly maintenance fee of \$5.50. Full term cost amount payable of \$27,459.32. Finance only not an offer of finance. Terms, conditions and lending criteria apply.

Purchase Price

\$20,999

Includes GST, Registration & Licensing

Indicative repayments

\$105.61 per week*

Based on a 60 month term & no deposit.
Total repayments (260) = \$27,459.32

CARS CONNECT

AWOS UTES VAN CARS

Gain peace of mind with
Mechanical Breakdown
Insurance. Ask us how.

CARS CONNECT

AWOS UTES VAN CARS

Top features

» Air Bags

» Air Conditioning

» Body Kit

» Central locking

» Central Locking

» Child seat anchor poin...

» Driver airbag

» Passenger airbag

» Power steering

» Remote locking

» Tow Bar

Body Style

Ute

Odometer

425,314 km

Engine

2982 cc

Fuel Type

Diesel

Transmission

Manual

Wheels

Steels

VIN

MR0EZ12G804152159

Interior

Black, FABRIC

Safety

2 star

safety rating

Based on 2024 UCSR rating
for 05-15 models

Reg No.

PFT682

Ext Colour

Green

History

-

Seats

5 seats, Fabric

CO2 Emissions

★ ★ ☆ ☆ ☆ ☆

248 grams/km

Energy Economy

★ ★ ☆ ☆ ☆ ☆

Annual fuel cost of \$3,670
9.3L per 100km

Cost per year is an estimate based
on diesel price of \$2.00 per litre and
an average distance of 14000 km.
Includes Road User Charges (RUC).
Emissions and Energy Economy
figures standardised to 3P WLTP.

Stock ID: 2558



Cars Connect | Phone 021 229 7721 | Email info@carsconnect.co.nz
6 Drury Street, New Lynn, Auckland 0600, New Zealand
www.carsconnect.co.nz

* Cars Connect is not a lender nor a financial adviser. Any amounts displayed should not be seen as an offer of finance or taken as financial advice. The interest rate, fees and loan term used in this calculation may not actually represent those available from lenders. Actual interest rates, fees and loan terms will vary per lender and are typically based on an assessment of your credit risk and responsible lending criteria. Any repayment amounts displayed are indicative only and have been calculated using several other indicative inputs. The interest rate used in this calculation is an arbitrary 9.95%, however exact interest rates vary per lender. The term of the loan used in this calculation is 60 months. Exact terms available vary per lender although options typically include 6, 12, 18, 24, 36, 48 and 60 months. This calculation also includes two typical mandatory fees charged by lenders. These are an account admin fee of \$1.50 per month (other payment frequencies may be available) and a one-off establishment fee of \$495.00. Typically, this fee can be paid upfront or, as in this calculation, be capitalised over the contract term, ie. included in the loan amount. These fees can vary per lender and other non-mandatory fees and charges may also apply. The total amount of repayments has been calculated by multiplying 260 weekly repayments (based on a 60 month term) by the weekly repayment amount of \$105.61 which equals \$27,459.32. This calculator does not consider any of your own personal circumstances and we strongly suggest you seek budgeting advice prior to committing to any loan contract. Responsible lending criteria and lender terms and conditions will likely apply to any finalised loan contract. Proof of security and/or vehicle insurance may also be required before proceeding.