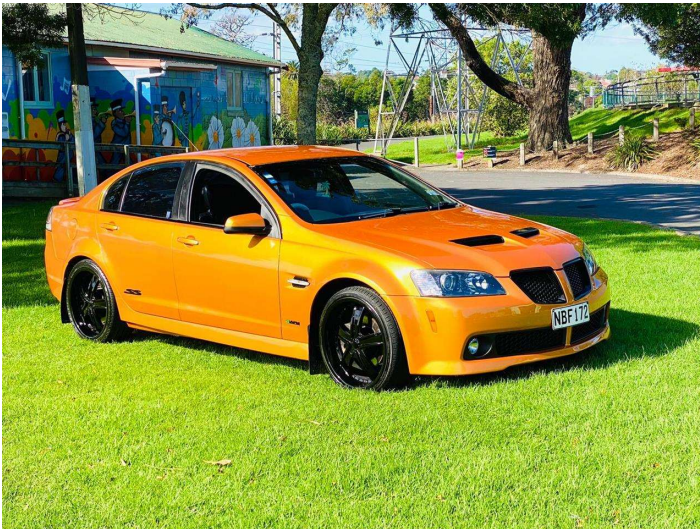


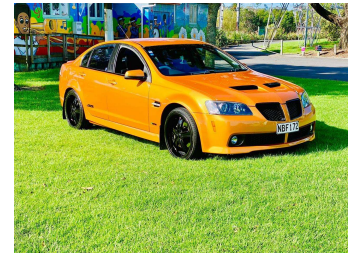
2010 Holden Commodore SS-V SPECIAL EDITION V8



CARS CONNECT
AWOS UTES VAN CARS

Finance this car from
\$247.64*
per week

*Finance calculation based on a 60 month term, no deposit and with an example annual fixed interest rate of 9.95%. Actual interest rate may be higher or lower. Includes an establishment fee of \$495.00 and a monthly maintenance fee of \$5.00. Not term cost. Amount payable of \$64,386.39. Connect only, not an offer of finance. Terms, conditions and lending criteria apply.



Purchase Price **\$49,999**
Includes GST, Registration & Licensing

Indicative repayments
\$247.64 per week*
Based on a 60 month term & no deposit.
Total repayments (260) = **\$64,386.39**

Gain peace of mind with
Mechanical Breakdown
Insurance. **Ask us how.**

Top features

- » Air Bags
- » Air Conditioning
- » Alloy wheels
- » Body Kit
- » Car Alarm
- » Central locking
- » Central Locking
- » Child seat anchor poin...
- » Cruise Control
- » Driver airbag
- » Electric Mirrors (Retr...
- » Electric Seats
- » Fog Lights
- » Parking Sensors
- » Passenger airbag
- » Power steering
- » Remote locking
- » Sports Exhaust

Body Style
5 door, Saloon

Odometer
65,200 km

Engine
5967 cc, V8

Fuel Type
Petrol

Transmission
Auto

Wheels
20", Custom Alloys

VIN
6G1EP5EY7AL440841

Interior
Black, Leather

Safety

Based on 2024 UCSR rating for 06-13 models

Reg No.
NBF172

Ext Colour
Orange

History
-

Seats
5 seats, Leather

CO2 Emissions
☆☆☆☆☆☆
346 grams/km

Energy Economy
☆☆☆☆☆☆
**Annual fuel cost of \$5,640
14.4L per 100km**

Cost per year is an estimate based on petrol price of \$2.80 per litre and an average distance of 14000 km. Emissions and Energy Economy figures standardised to 3P WLTP.

Stock ID: 2193



Cars Connect | Phone 021 229 7721 | Email info@carsconnect.co.nz
6 Drury Street, New Lynn, Auckland 0600, New Zealand
www.carsconnect.co.nz

* Cars Connect is not a lender nor a financial adviser. Any amounts displayed should not be seen as an offer of finance or taken as financial advice. The interest rate, fees and loan term used in this calculation may not actually represent those available from lenders. Actual interest rates, fees and loan terms will vary per lender and are typically based on an assessment of your credit risk and responsible lending criteria. Any repayment amounts displayed are indicative only and have been calculated using several other indicative inputs. The interest rate used in this calculation is an arbitrary 9.95%, however exact interest rates vary per lender. The term of the loan used in this calculation is 60 month. Exact terms available vary per lender although options typically include 6, 12, 18, 24, 36, 48 and 60 months. This calculation also includes two typical mandatory fees charged by lenders. These are an account admin fee of \$1.50 per month (other payment frequencies may be available) and a one-off establishment fee of \$495.00. Typically, this fee can be paid upfront or, as in this calculation, be capitalised over the contract term, ie. included in the loan amount. These fees can vary per lender and other non-mandatory fees and charges may also apply. The total amount of repayments has been calculated by multiplying 260 weekly repayments (based on a 60 month term) by the weekly repayment amount of \$247.64 which equals \$64,386.39. This calculator does not consider any of your own personal circumstances and we strongly suggest you seek budgeting advice prior to committing to any loan contract. Responsible lending criteria and lender terms and conditions will likely apply to any finalised loan contract. Proof of security and/or vehicle insurance may also be required before proceeding.